

# COMPANY PROFILE



## SUMI APPARELS(PVT) LTD

### **Address:**

A-112, 113(West Side), BSCIC Industrial Estate  
Tongi-1710, Gazipur, Bangladesh.

Phone: +88-02-9817815, +88-02-9814553

Fax: +88-02-9816164.



# SUMI APPARELS(PVT) LTD.

(A 100% Export Oriented Woven Garments Industry)



12 PRINCIPLES



## Introduction

**Sumi Apparels(Pvt) Ltd.**, is a 100% Export Oriented Readymade Garments industry, came into being in the year 2011 as a new member in the 'Goldstar' family. Under Goldstar Group, we have 5 garments production units, One Washing Plant, One Carton & Poly manufacturing plant and One Logistics unit. We started our journey in 1992 with 2(two) lines only and now the company has matured to 50 lines over a period of 27 years time. Through a wide range of products & services, the company has earned the goodwill of reputed brands from across the globe. Producing over 18 million pieces of garments per year, it is among the largest vendors in Bangladesh for both Lidl and Aldi with annual turnover of over 50 million US Dollars. The company has consistently excelled with a strong performance record of substantial annual growth over the last few years, and has earned several awards and recognitions from importers/ brands.

Since its inception, Sumi has grown to be one of the leading apparel solution providers in Bangladesh with regard to commitment to quality, timely delivery and total value. Engaged in the development and manufacturing of woven garments (tops and bottoms), Sumi alone now employs roughly 1,850 people and has an annual turnover of over US Dollars 28 million.

# SUMI APPARELS(PVT) LTD.

(A 100% Export Oriented Woven Garments Industry)



12 PRINCIPLES



We as a team, are dedicated to excellence in merchandising, product development, production and logistics. Through our extensive sourcing network, we are able to effectively source and arrange the best materials at the shortest possible timeframe. Our customers rely on us to deliver them the best quality products and required services that in turn should enable them to successfully compete in the emerging market place.

Our success is rooted in investments in human capital and world class manufacturing facilities. We possess the skills, experience, infrastructure and financial strength necessary to attain customer satisfaction through excellence in product quality, flexibility and cost competitiveness. The company is always exploring new markets across the world with an experienced perspective, contemporary professionalism and high-end technology. Goldstar Group welcomes all our prospective customers to visit and evaluate our factories firsthand.

Sumi Apparels(Pvt) Ltd., is under the membership of the Bangladesh Garment Manufacturers and Exporters Association (BGMEA) and has successfully been audited by ACCORD and BSCI. The main products it produces are trousers, shirts, jackets, overall, shorts of all type and school-wears.

# SUMI APPARELS(PVT) LTD.

(A 100% Export Oriented Woven Garments Industry)



12 PRINCIPLES



## Vision

At Sumi, we endeavor to become a market leader through the pursuit of high productivity, advanced technological innovation and absolute customer satisfaction by leveraging on the strengths of our core business while staying true to our universal social and environmental standards.

## Mission

Sumi is committed to supporting its customers, fulfilling and exceeding their expectations, and enabling them to be more competitive in the market place.

The company is committed to being a safe and healthy work place that provides its employees with the opportunity to grow and develop as a family.

The company is committed to continue to grow and evolve considering our corporate social and environmental responsibilities throughout the process.

# SUMI APPARELS(PVT) LTD.

(A 100% Export Oriented Woven Garments Industry)



12 PRINCIPLES



## Key Information

**Registered Name:** Sumi Apparels(Pvt) Ltd.

**Address:** A-112, 113(West Side), BSCIC Industrial Estate, Tongi-1710, Gazipur, Bangladesh. Phone: +88-02-9817815, +88-02-9814553, Fax: +88-02-9816164.

**Year of inception:** 2011

**Total sewing line:** 18

**Total production floor space:** 1,07,500 sq. ft

**Total workforce:** 1850 (Male female ratio: 40:60)

**Total sewing machines:** 1264

**Manufacturing business:** Readymade woven tops and bottoms

**Monthly production capacity:** 7,00,000+ pcs

**Annual turnover:** 28.20 million USD

**Lead time:** 75-120 days

## Board of Directors/ Management

- |                         |   |                         |
|-------------------------|---|-------------------------|
| • Md. Rezaul Hossain    | : | Managing Director       |
| • Mrs. Farzana Hossain  | : | Director                |
| • Mr. Tasfin Hossain    | : | Director                |
| • Mr. Tanfin Hossain    | : | Director                |
| • Mr. Masud Iqbal       | : | Director(Operations)    |
| • Mr. Jahangir Alam     | : | Director(Merchandising) |
| • Mr. Swapon Sutra Dhar | : | Director(Production)    |
| • Mr. Shamim Ahsan, FCA | : | Director (Finance)      |

# SUMI APPARELS(PVT) LTD.

(A 100% Export Oriented Woven Garments Industry)



12 PRINCIPLES



## Contact Persons

Name	Position	Cellphone No.	Email ID
Md. Rezaul Hossain	Managing Director	+8801777780600	hossain@goldstargroupbd.com
Md. Jahangir Alam	Director (Merchandising)	+8801787697779	jahangir@goldstargroupbd.com
Masud Iqbal	Director (Operations)	+8801777780667	masud@goldstargroupbd.com

## Certification

Sumi Apparels(Pvt) Ltd., has been successfully evaluated/ certified/ audited by/ for:

- ACCORD
- BSCI
- GOTS
- OCS
- WRAP
- SEDEX

# SUMI APPARELS(PVT) LTD.

(A 100% Export Oriented Woven Garments Industry)



12 PRINCIPLES



## Clients: We Produce for Brands

- LIDL
- ALDI
- COSTCO
- WALMART
- JC PENNY
- SEARS
- ZARA
- TARGET
- KOHLS
- GAP
- PROMTEX
- KIK
- NEW YORKER
- NORMA
- CARREFOUR
- MATALAN
- IDG
- TRISTER
- MALWEE
- ACTION
- RIACHUELO
- GOLDVEX

# SUMI APPARELS(PVT) LTD.

(A 100% Export Oriented Woven Garments Industry)



12 PRINCIPLES



## **Process Available**

- Sample development
- Cutting
- Fusing
- Sewing
- Washing
- Finishing
- Packing
- Pull test

## **Quality Assurance**

The management of Sumi Apparels(Pvt) Ltd., is committed to providing the highest quality products at all times. All garments pass through strict quality control checkpoints at every stage of production. Corporate Quality Auditors to oversee production, work independently from floor management and report directly to the Director and MD of the company.



# SUMI APPARELS(PVT) LTD.

(A 100% Export Oriented Woven Garments Industry)



12 PRINCIPLES

## Corporate Social Responsibility(CSR)

**Sumi Apparels(Pvt) Ltd.**, one of the best CSR practicing factories of Bangladesh, has adopted contemporary concepts of management systems which ensure a working environment that is socially, environmentally and ethically compliant for the workforce.

We have developed our operational policies in such a way that brings in positive changes towards implementation of CSR goals. Our CSR policy is an integrated part of our overall business policy. We have a separate HR, compliance and welfare team who monitor all facilities daily and submit their report to the authorized persons. If any threat regarding health & safety issue is found, they take necessary action without delay.

Employees at all levels are aware of the company's CSR policy and activities as we communicate with the workers by awareness meeting, PA systems, through mid level management meeting, daily production meeting, orientation of new recruits etc. We have a separate budget for implementing the CSR activities. We measure the impact of our CSR activities through internal and external evaluation. The company provides all employees with free medical, health, hygiene and emergency financial assistance. Safety programs and routine drills ensure that the facilities remain updated and employees are aware of risks and capable of dealing with emergencies.

# SUMI APPARELS(PVT) LTD.

(A 100% Export Oriented Woven Garments Industry)



12 PRINCIPLES

## List of Equipment/ Machineries

S/No.	Type of Machine	Quantity Available
1	Single Needle Lock Stitch(Auto)	463
2	Single Needle Lock Stitch(Manual)	427
3	Overlock	130
4	Double Needle Lock Stitch	62
5	Chain Stitch	20
6	Feed of the Arm	18
7	Kansai	24
8	Flat Lock	4
9	Button Hole	15
10	Bartek + Button Stitch	31
11	Bartek Manual	2
12	Button Stitch	2
13	Snap Button Compressor	20
14	Snap Button Manual	4
15	Pocket Seam(Flatlock cover seam)	4
16	Zig Zag Machine	2
17	Eyelet Machine	2
18	Blind Stitch	3
19	Pocket Setter Machine	2
20	Cutting Machine	12
21	Fusing Machine Small	6
22	Fusing Machine Hasiamma	2
23	Velcro Machine	2
24	Metal Detector	1
25	Fabric Checking Machine	1
26	Thread Sucker Machine	2
27	Boiler	1
28	Steam Iron	12
29	Vacuum Table	14
30	Steam Iron for Sewing	24
31	Strap Binding Machine	1
32	Thread Re-rolling Machine	1

# SUMI APPARELS(PVT) LTD.

(A 100% Export Oriented Woven Garments Industry)



CIPLES

33	Button Pull-Test Machine	1
34	Diesel Generator	1
35	Compressor	1
36	Heat Seal Machine	2
37	CAD Machine	1
38	Pen Pattan Machine	1
39	Hydraulic Presser Electric	1
40	Hang Tag Stapler	2
41	Band Knife Machine	1
42	Saddle Stitch Machine	1
<b>Grand Total</b>		<b>1264</b>

# SUMI APPARELS(PVT) LTD.

(A 100% Export Oriented Woven Garments Industry)

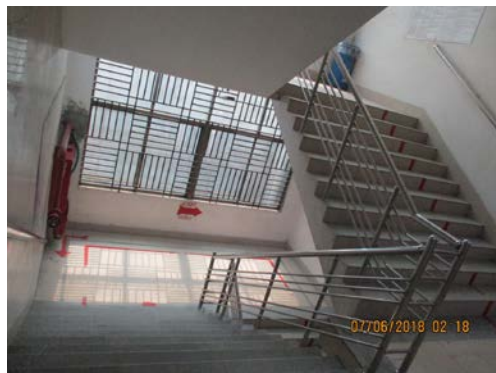


12 PRINCIPLES



## Some Industrial and Product Pictures

### Main Building





# SUMI APPARELS(PVT) LTD.

(A 100% Export Oriented Woven Garments Industry)



12 PRINCIPLES



## Corporate Office with Display Room



# SUMI APPARELS(PVT) LTD.

(A 100% Export Oriented Woven Garments Industry)



12 PRINCIPLES



## CAD Room



## Fusing Room



# SUMI APPARELS(PVT) LTD.

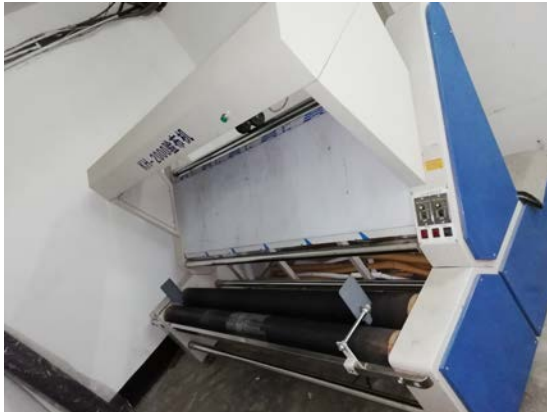
(A 100% Export Oriented Woven Garments Industry)



12 PRINCIPLES



## Fabric and Accessories Inspection





# SUMI APPARELS(PVT) LTD.

(A 100% Export Oriented Woven Garments Industry)



12 PRINCIPLES



## Sample Section





# SUMI APPARELS(PVT) LTD.

(A 100% Export Oriented Woven Garments Industry)



12 PRINCIPLES



## Cutting Section



# SUMI APPARELS(PVT) LTD.

(A 100% Export Oriented Woven Garments Industry)



12 PRINCIPLES



## Sewing Section





# SUMI APPARELS(PVT) LTD.

(A 100% Export Oriented Woven Garments Industry)



12 PRINCIPLES



## Finishing Section



# SUMI APPARELS(PVT) LTD.

(A 100% Export Oriented Woven Garments Industry)



12 PRINCIPLES



## Other Areas



Child Care Room



Medical Room



Store



Store



Substation



Substation



# SUMI APPARELS(PVT) LTD.

(A 100% Export Oriented Woven Garments Industry)



12 PRINCIPLES



## Other Areas



Boiler Room



Loading Unloading Point



ETP



ETP



ETP



Diesel Generator

# SUMI APPARELS(PVT) LTD.

(A 100% Export Oriented Woven Garments Industry)



12 PRINCIPLES



## Fire Fighting System





# SUMI APPARELS(PVT) LTD.

(A 100% Export Oriented Woven Garments Industry)



12 PRINCIPLES



## Product Picture



# SUMI APPARELS(PVT) LTD.

(A 100% Export Oriented Woven Garments Industry)



12 PRINCIPLES



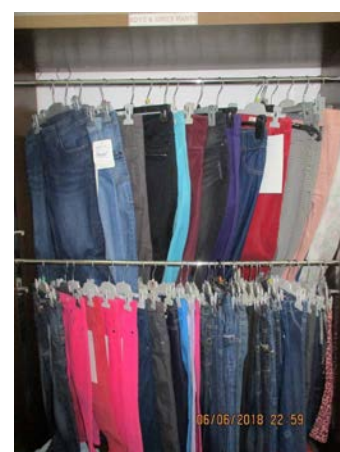


# SUMI APPARELS(PVT) LTD.

(A 100% Export Oriented Woven Garments Industry)



12 PRINCIPLES

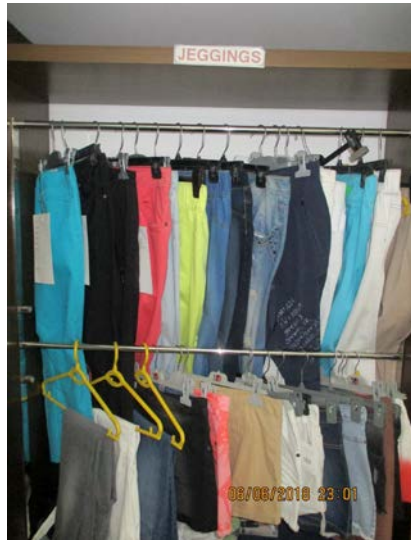


# SUMI APPARELS(PVT) LTD.

(A 100% Export Oriented Woven Garments Industry)



12 PRINCIPLES





# SUMI APPARELS(PVT) LTD.

(A 100% Export Oriented Woven Garments Industry)



12 PRINCIPLES



# SUMI APPARELS(PVT) LTD.

(A 100% Export Oriented Woven Garments Industry)



12 PRINCIPLES





# SUMI APPARELS(PVT) LTD.

(A 100% Export Oriented Woven Garments Industry)



12 PRINCIPLES

